

# February

Child Management  
Associates

Providers' Playground

## Craft Time: Lil Love Monsters

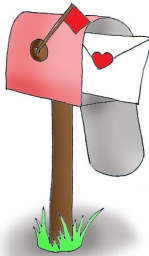


Directions:

- Wrap yarn around cardboard piece (long-ways) 150-200 times.
- On one side of the cardboard tie a knot around the center of the yarn.

Supplies:

- Yarn
- Pipe cleaners
- Googly eyes
- Glue gun
- 50oz paper cups
- Piece of cardboard - 2 1/2" x 4"
- Scrapbook paper
- Scissors or heart punch



- Flip the cardboard over and cut through the center of the yarn. (This is your main hair pom pom)
- Take an upside down paper cup and hot glue your pom pom to the top.
- Make another pom pom by wrapping the yarn (short-ways) around the cardboard about 20-30 times.
- This is your "toupee" pom pom. Hot glue it on top of the other pom pom.
- Decorate using googly eyes, pipe cleaners for antennae, hearts etc.

<http://eighteen25.com/2013/01/lil-love-monsters/>



In this Issue:

Craft Time	1
Snack Time	1
Business Corner	2
Trainings	2
Valentine Fun Facts	2
Claim Due Dates	2

CMA will be closed  
Mon, Feb 20th



## Snack Time: Valentine's Dipped Pretzels

Supplies:

- Pretzels (rods and twists)
- Candy melts in desired color
- Wax paper
- Candy sprinkles/décor of choice



Directions:

- Melt candy melts per directions on package
- Dip pretzels covering about 1/3 of the surface and tap on side of bowl to remove excess candy melt mixture
- Place dipped pretzels on wax paper and decorate with your favorite candy sprinkles
- Let pretzels harden for about an hour

<http://www.5minutesformom.com/49632/kid-friendly-dipped-and-decorated-pretzels-for-valentines-day/>

CMA

8831 S Redwood Rd #D1  
West Jordan, UT 84088  
(P) 801-566-1007  
(F) 801-566-1158



Business Corner

*Child numbers*

If you are enrolling/reactivating a child that has a number that has been used before at any point, please contact the office before you bubble that child in for the month. Oftentimes our computer system will not allow numbers to be reissued and will result in an error on your claim.

*Renewal Paperwork*

Please watch your mail for paperwork renewals. They are sent approximately a month and a half before they are due to expire. They are time sensitive so make sure you get them turned in on time so you don't see a delay in payments.



*Posting Menus*

It is a state requirement that your menus be posted, visible to parents, or corrective action will be necessary. This could cause you to become ineligible to participate in the food program if you don't follow the requirements. Your monitors will be checking for this each visit. If your menu is not posted meals will be disallowed.



Annual Trainings

West Valley City Library

Wed, Feb 8 TONGAN	6:00pm-8:00pm
Thur, Feb 9 VIETNAMESE	6:00pm-8:00pm

Ogden (Pleasant Valley Branch)

Tues, Feb 21	6:00pm-8:00pm
--------------	---------------

Bountiful (So. Davis County)

Wed, Feb 22	6:00pm-8:00pm
-------------	---------------

These are the final dates for training this year in Salt Lake/Davis counties. There is limited seating available so call the office and sign up today to reserve your spot!

CPR & First Aid

Training

Karen Lang

Office: 801-562-2663

Karen@uemtc.org

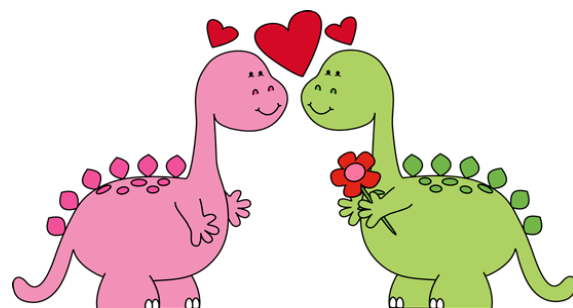
Valentine's Fun Facts

- Teachers receive the most Valentine's Day cards each year.
- Millions of heart shaped boxes of chocolate are sold each Valentine's.
- Over 1 billion Valentine's cards are sent worldwide each year.
- 60% of America's red roses are grown in California.
- In Latin cupid means Amor. Amor in English means love.

<http://www.kidsplayandcreate.com/funvalentines-day-facts-for-kids/>

« Claim Due Dates »

December	January	February
Tues, Feb 28th	Fri, March 31st	Mon, March 6th



This institution is an equal opportunity provider and employer.